

INTERNATIONAL TABLE TENNIS FEDERATION

PARA TABLE TENNIS COMMITTEE



SITE INSPECTION

Name of Tournament 2017 Oceania Para Championships

Ranking Factor requested :50

Name of the National Association :Fiji Table Tennis Association

Chairperson of the Organizing Committee :Anthony Ho

Dates of Play :13 – 16 of April 2017

Name of Site inspection Delegate :Christian Holtz

Report submitted to ITTF : 9 December 2016

Situation	<p>Weather: Suva has a tropical rainforest climate, temperatures are relatively constant throughout the year with an average temperature of 23 Degrees Celsius and rainfall of 310mm in the month of April.</p> <p>History: Suva is the capital of Fiji and the most cosmopolitan city in the Southern Pacific Ocean.</p> <p>Special:</p>
------------------	------------------------------------------------------------------------------------------------------------------------------------------------------------------------------------------------------------------------------------------------------------------------------------------------------------------------------------------------------------------------

Airport	<p>Number of airports:2 major airports.</p> <ul style="list-style-type: none"> • The Nausori International Airport caters mainly to the domestic market and is located 23kms from the centre of Suva. • Nadi International Airport is the main airport in Fiji, which handles 97% of international visitors. The airport is 190kms from the city centre of Suva and Fiji Airways offers a 25 minute domestic flight linking the two airports. <p>Accessibility: The Nadi International Airport has direct routes from:</p> <ul style="list-style-type: none"> • Australia (Brisbane, Gold Coast, Sydney & Melbourne), • Hong Kong • Korea (Seoul-Incheon) • Kiribati • Nauru • PNG • New Caledonia, • New Zealand (Auckland, Christchurch & Wellington), • Samoa, • Singapore • Solomon Islands, • Tonga • Tuvalu • USA (Honolulu, Los Angeles & San Francisco) • Vanuatu <p>The Nausori International Airport has direct routes from:</p> <ul style="list-style-type: none"> • Australia • New Zealand • Samoa • Tonga • Tuvalu • Vanuatu <p>Please note that there are frequent daily connections between both airports (25 minutes travel time) and it takes 3.5 hours to drive from Nadi International Airport to the centre of Suva.</p> <p>Distances :</p> <table style="margin-left: 40px;"> <tr> <td>Nausori Airport – Hotel</td> <td>:23km</td> </tr> <tr> <td>Nadi Airport- Hotel</td> <td>:190km</td> </tr> <tr> <td>Nausori Airport –Playing Venue</td> <td>: 21km</td> </tr> <tr> <td>Nadi Airport – Playing venue</td> <td>:193 km</td> </tr> </table>	Nausori Airport – Hotel	:23km	Nadi Airport- Hotel	:190km	Nausori Airport –Playing Venue	: 21km	Nadi Airport – Playing venue	:193 km
Nausori Airport – Hotel	:23km								
Nadi Airport- Hotel	:190km								
Nausori Airport –Playing Venue	: 21km								
Nadi Airport – Playing venue	:193 km								

Transport

Airport – Hotel

Schedules: **Depending on arrivals.**

Number of vehicles: **As per Fleet Sheet of our Exclusive Destination Management Company, Pacific Destinations Limited appointed by Fiji Table Tennis**

Accessibility: **Fiji does not have ramps for wheelchair passengers. Wheelchair passengers will be transported in Vans and station wagons where the wheelchairs can be stored in the boot or luggage areas. Others will be transported in smaller vehicles, coaches or buses depending on arrival times.**

Travel time : **35 minutes from Nausori Airport, 3 hours from Nadi Airport**

Special issues for officials: (if there are) **International Delegates will be transported in luxury vehicles**

<<<<photos>>>>

Hotel – Venue

Schedules: **Depending on competition schedule, vehicles will be available on a shuttle basis**

Number of vehicles: **As per Fleet Sheet of Exclusive Destination Management Company, Pacific Destinations Limited appointed by Fiji Table Tennis**

Accessibility: **Fiji does not have ramps for wheelchair passengers. Wheelchair passengers will be transported I Vans and station wagons where the wheelchairs can be stored in the boot or luggage areas. Others will be transported in smaller vehicles, coaches or buses .**

Travel time : **15 to 20 minutes depending on traffic and the time of the day**

Special issues for officials: (if there are)- **International Delegates will be transported in luxury vehicles. Referees and umpires officials will be transported in separate coaches or buses.**

Emergency (contingency plan) -Pacific Destinations Limited has a sizeable and good fleet range .

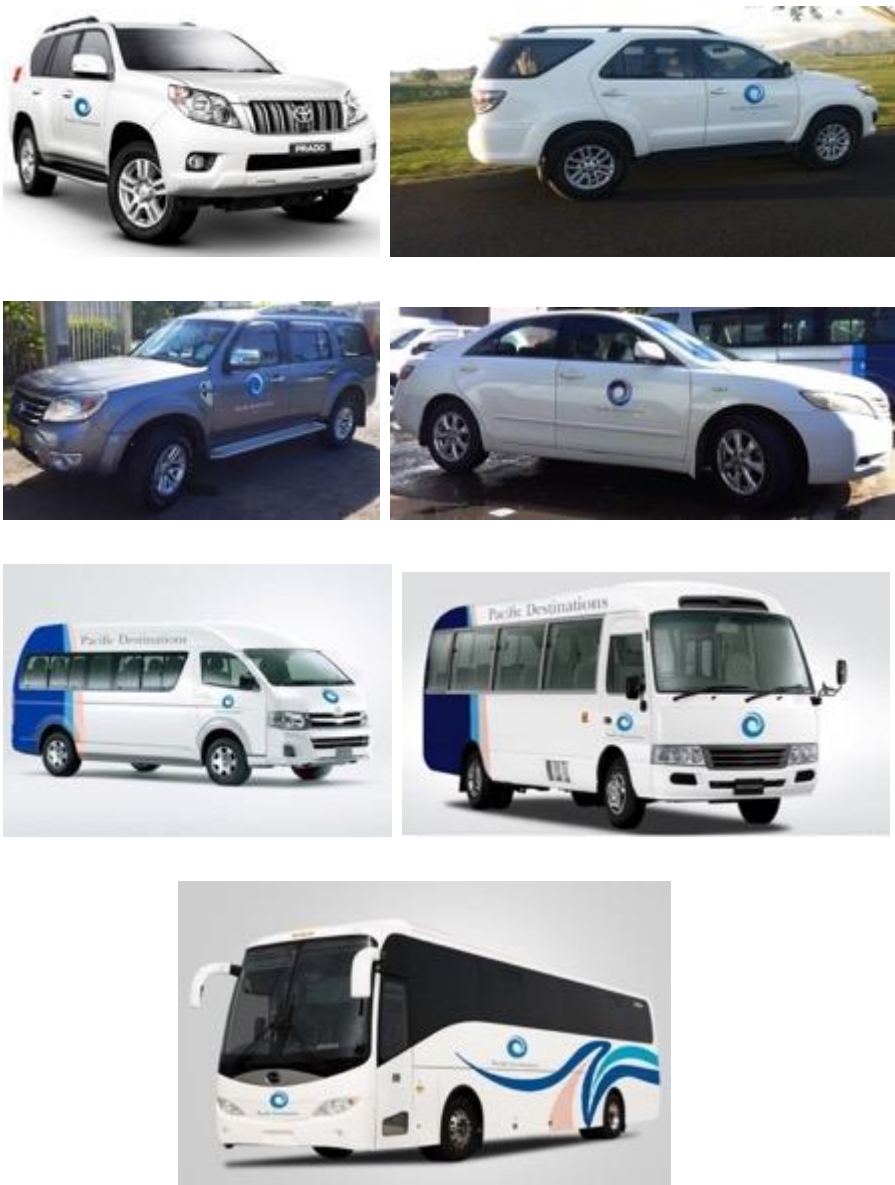
Others remarks

Refer Separate Attachment for Pacific Destinations Fleet Summary

Pacific Destinations - Fleet Summary						
Vehicle Make	Model	Year	Seating Capacity	Quantity (in fleet)	Total Seating Capacity	Vehicle Details e.g. A/C, Manual, Automatic, Baby/car seat friendly, luggage capacity (incl. trailer use)
Toyota	Prado	2008, 2009, 2011, 2013,2015	4	8	32	Manual/Auto, A/C, Can accomodate baby car seat, luggage can be stored in the boot
Toyota	Fortuner	2013, 2014	4	2	8	Auto, A/C, Can accomodate baby car seat, luggage can be stored in the boot

	Ford	Everest	2011	4	7	28	Automatic, Fully Air Con, can accomodate baby car seat, luggage stored in the boot
	Mitsubishi	Nativa	2008	4	1	4	Automatic, Fully Air Con, can accomodate baby car seat, luggage stored in the boot
	Toyota	Camry	2006, 2007	4	2	8	Automatic, Fully Air Con, can accomodate baby car seat, luggage stored in the boot
	Toyota	Hiace Van (High Roof)	2007, 2010, 2011	13	9	117	Manual, A/C, Can accomodate baby car seat, 10 van has DVD system, luggage can be stored in the boot and it can also pull trailer for luggage
	Toyota	Hiace Van (High Roof)	2016	15	2	30	Manual, A/C, Can accomodate baby car seat, luggage can be stored in the boot and it can also pull trailer for luggage
	Toyota	Hiace Van (Standard Roof)	2012	10	1	10	Manual,A/C, Can accomodate baby car seat and luggage stored in boot and it can also pull trailer for luggage
	Toyota	Coaster	2005, 2009 and 2010	22	3	66	Manual, A/C, Can accomodate baby car seat, 2 coaster has DVD system ,pulling trailer for luggage
	Bonluck	President 2	2013	49	2	98	Fully air conditioned, onboard audio systems and DVD player with 2 x 21 inch screens, built to Australian Design Rule (ADR) standards

	Bonluck	President 2	2016	53	1	53	Fully air conditioned, onboard audio systems and DVD player with 1 x 19 inch screens, built to Australian Design Rule (ADR) standards
	Bonluck	Cooper	2016	35	1	35	Fully air conditioned, onboard audio systems and DVD player with 1 x 19 inch screen, built to Australian Design Rule (ADR) standards
					39	489	



Accommodation & Meals

Teams / Officials

Name of Hotel and full address: Grand Pacific Hotel, 584 – 628 Victoria Parade, Suva, Fiji.



Elevators : 1 x Zone C building(4 levels)

Width of doors : 90cm

How many wheelchairs taking : 1

Elevators : 1 x Heritage building (2 levels)

Width of doors : 90cm

How many wheelchairs taking : 1

Room Type:

- Park View Rooms (Deluxe Room)- 34 sqm excl balcony
- Superior Rooms – 37 sqm excl balcony
- Premier Rooms – same as superior room

Brief Description of Room Type:

- Park View Rooms – View of / Facing Albert Park
- Superior Rooms – View out to Resort Pool

- Premier Rooms – Offers Partial Ocean View

Number of rooms in This Category:

- Park View Rooms – 16 Rooms
- Superior Rooms – 39 Rooms
- Premier Rooms – 40 Rooms

Bedding Configurations options in this category:

- Park View Rooms – 13 King Bedded rooms & 3 twin bedded rooms
- Superior Rooms – 31 King Bedded Rooms & 8 Twin bedded Rooms
- Premier Rooms – 29 Kind Bedded Rooms & 11 Twin bedded Rooms

Accessibility (for every kind of rooms)

- Width of entrance passage : 85cm
- With of bathrooms : 85cm
- Step or doors to shower : No door or steps to shower
- Bath or shower or combined : shower

However please note Grand Pacific has further advised the below:

All our rooms have wheelchair access as well as well as wheel chair friendly bathrooms. We only have currently 22 twin bedded rooms however, can add a further 20 as we will place rollaway beds in king rooms so if accepted our twin room offering will be a total of 42 twin bedded rooms.

We have two lifts in the hotel and the layout of the property makes it very easy for wheel chair accessibility.

These Rooms While Wheel Chair Accessible – do not have the proper handicap bathroom facilities
 Fiji Table Tennis can provide seats for the showers if required for wheelchair guests that have a lower level of disability for these rooms.

For Specific Wheelchair friendly rooms

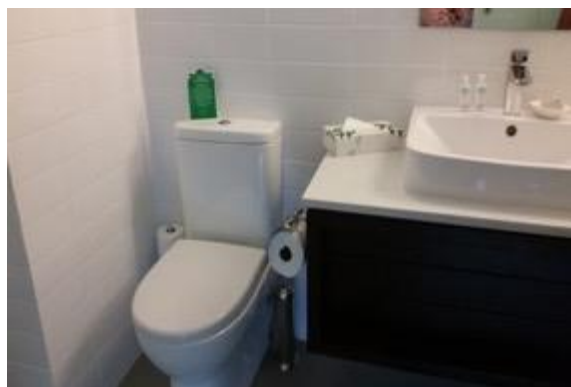
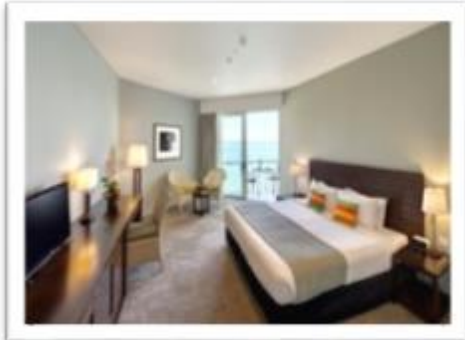
Please Specify How Many Wheel Chair Accessible Rooms : **3 (101,102,103)**

State Wheel Chair Accessible Room Facilities : **Similar to king bedded rooms**
With option to add one rollaway
Bed per room

State Wheel Chair Accessible Room Features: **Bench and railings in shower room**
and grab rail in toilet

- Change of linen : All rooms are serviced daily with fresh linen
- Laundry : Laundry service available daily

- TV : yes
- Air-conditioning : yes
- Internet Facilities : yes wifi & cable
- Electrical plugs : yes
- Parking : yes
- Shops : yes, boutique :
- Banking or teller machine : no



Photos of all rooms including entrance to room, corridor shower and toilet. These rooms are all wheelchair accessible and we can include seats and other support in the shower for wheelchair persons with a lower level of disability. With the toilet the sink bench is very close to the toilet and together with other support like crutches/walkers can be used .



Specific wheelchair friendly rooms shower and toilet facilities.

Meal Time /Details

Breakfast: where ... Levuka Restaurant & Terrace When 7.00am – 10.30am
Lunch : where ...Levuka Restaurant & Terrace When 11.30am– 3.00pm
Diner : where ...Levuka Restaurant & Terrace When 6.00pm – 10.00pm

Packed Meals Rate and Inclusions : Approx. \$40 vip
Water beverages : Approx. \$4.50 vip 500 ml
Variety : Approx. \$8.50 vip per glass
Vegetarian meals : Approx. \$40 vip
Assistance to carry trays : To be discussed



Name of Hotel and full address: Holiday Inn Suva, 501 Victoria Parade, Suva, Fiji.



Elevators : **No**
Width of doors : Not applicable
How many wheelchairs taking : Not applicable

Room Type: Superior Garden View Room

Brief Description of Room Type:

Enjoy garden views from the balcony of your newly renovated room with one queen bed. High speed internet a relaxing sofa complimentary tea and coffee and a flat screen TV make this a comfortable home away from home. Children 12 and under stay free in their parents room using existing bedding.

Number of rooms in This Category: 92

Bedding Configurations options in this category:

- Single – 1 Queen Bed
- Twin - 2 x Double Beds

Other room types also available- 28 standard rooms. These are similar in size to the superior Garden View rooms except that it has no view and less furniture.

For the single rooms, a rollaway bed can also be included.

Accessibility (for every kind of rooms except the wheelchair rooms)

Width of entrance passage : 85.5cm
Width of bathrooms : 142cm
Step or doors to shower : 1 – 19cm
Bath or shower or combined : Yes





Photos of standard/superior rooms , bathroom and elevated shower area

Please Specify How Many Wheel Chair Accessible Rooms : 1

How many beds: The Wheel Chair Room has always had 1 x Queen Bed but can add a rollaway bed if required

State Wheel Chair Accessible Room Facilities: Wheelchair accessible entrance and bathroom with seats and grab rail. Wheelchair rooms are all on the ground floor and similar in size and entrance width as the superior and standard rooms.



Photos of wheelchair room including shower and toilet

- Change of linen : Daily
- Laundry : Yes (Can do your own or outsourced)
- TV : Yes
- Air-conditioning : Yes
- Internet Facilities : Yes
- Electrical plugs : Yes (standard like Australia and NZ)
- Parking : Yes

Shops :None (within 10 mins of the hotel)
Banking or teller machine : None

Breakfast: where -Sirocco...When ...6.00-10.30am. (time)
Lunch : where ...Sirocco When 12.00am-2.00pm(time)
Dinner : where Sirocco When ...6.00-10.30pm.. (time)

Tapa Bar and Bati Ni Wai Pizzeria is open daily from 9.00am to 11.00pm

Packed Meals : Available on request
Water beverages : Bottled bottle for sale
Variety :
Vegetarian meals : Available
Assistance to carry trays : F&B Assistants

**In the case that used difference restaurant as hotel :
Name Not applicable**

Address :

Distance from Playing Venue :

Distance from Hotels :

<<<<< Photos >>>>>



Sirocco our new premium outlet focuses on Mediterranean cuisine or enjoy wood-fired pizza by the water's edge at Bati ni Wai as the sun sets over the harbor. Pool-facing Tapa Lounge Bar is a convenient spot for drinks, snacks and live music.





Name of Hotel and full address: Tanoa Plaza Hotel, Cnr Gordon & Malcom Street, Suva



Elevators : 1

Width of doors : 80 cm

How many wheelchairs taking : 1

Number of rooms: 60 Bed Rooms consisting of 32 Superior Rooms 2nd -5th Flr (single/double or twin share) Queen bed & a Double sofa bed 24 Deluxe Rooms 6th -8th Flr (single/double or twin share) Queen bed & a Double sofa bed 4 Executive Suites 1 Kind Size bed 9th Flr

Accessibility (for every kind of rooms) Superior And Deluxe /Executive

Width of entrance passage : 79cm

Width of bathrooms : 68cm

Step or doors to shower : Both

Bath or shower or combined : Shower

Please Specify How Many Wheel Chair Accessible Rooms : **NO (Refer to Information below)**

State Wheel Chair Accessible Room Facilities: **Refer to Note below**

State Wheel Chair Accessible Room Features: **Refer to Note below**

Advice from Tanoa Plaza:

We don't have standard facilities to accommodate for the disabled eg bathrooms; we do check them in according to advice from reception. But as they checks in we do our very best to meet their request eg we booked their rooms near the elevators, and we remove the bathroom glass screen doors so that the wheel chair goes straight into the bathroom and allow them to use the plastic chair that we placed into the bathroom



Change of linen : Daily
Laundry : Outsourced

TV : Yes

Air-conditioning : Yes
Internet Facilities : Yes
Electrical plugs : Yes
Parking : yes
Shops : 5 mins walk to the City
Banking or teller machine : No

Meal Time /Details

Breakfast: where ...Zest Restaurant Grd Floor When 6.00am till 10.30am(time)
Lunch : where Zest Restaurant Grd Floor When 11am till 5pm(time)

Dinner : where Zest Restaurant Grd Floor . When 6pm till 10.30pm..(time)

Packed Meals Rate and Inclusions : Yes we have this available

Water beverages : Yes

Variety : Yes depending on menus

Vegetarian meals : Yes depending on menus

Assistance to carry trays : Yes

Name of Hotel and full address: Pacific Theological College, Suva

Elevators: 0

Width of doors : 90 cm+

How many wheelchairs taking : 30+ athletes

Number of rooms: 7 female wheelchair friendly rooms with 2 single beds each, a ceiling fan, desk and wardrobe , 7 male wheelchair friendly rooms similar to the females, a 4 share wheelchair friendly room, a VIP wheelchair friendly room

Accessibility (for every kind of rooms) All room types have same access

Width of entrance passage : 90cm

Width of bathrooms : 90cm

Step or doors to shower : No

Bath or shower or combined : Shower

Please Specify How Many Wheel Chair Accessible Rooms : **15**

State Wheel Chair Accessible Room Facilities: **Refer to Note below**

State Wheel Chair Accessible Room Features: **Refer to Note below**



a large meeting/seminar room, laundry service, large dining/kitchen, reception/lobby , TV area and with volleyball/tennis courts and on the sea front and with a good sea breeze throughout the day and night. Ample car park space and closer to the venue (5 minutes from venue). Female shower/toilet and male shower /toilet on a shared basis in each of the female and male wings

Maximum number of players /officials	60 (It is unlikely there will be more than 10 players on wheelchair with not more than 4 with lower levels of disability)
---------------------------------------------	-----------------------------------------------------------------------------------------------------------------------------------

Travel time and distance Hotel to Sport venue	<p>Teams/Officials Hotel. By Car/Taxis: 10-20 mins By Bus: Not required Rush hour traffic: 30 mins</p> <p>Taxis are outside each hotel. Transport shuttle to be included in package</p> <p>The Grand Pacific Hotel and Holiday Inn are adjacent to each other</p>
------------------------------------------------------	--------------------------------------------------------------------------------------------------------------------------------------------------------------------------------------------------------------------------------------------------------------------------------------------------------------

Sport venue general	<p>Name : Vodafone Arena Full postal address:P.O.Box 2348, Government Buildings, Suva General Accessibility : Ground floor only accessible by WC How many accessible WC : 2 Entry points on Ground Floor with ramps,ie Main door and back door Are there accessible WC near the FOP :Yes- full accessible as FOP is on ground floor</p> <p>Racket control room: own room Gluing area: Outside tent Meeting rooms:Own room Classification room:Separate room .Thereafter room will be used as Anti Doping Room</p> <p>Offices: Separate Room for Office Players Rest Area: Available Officials rest Area: Available Players Changes room:Available- separate for men and women Officials changes room:Available- separate for men and women Wheelchair storage: Available Media Facilities :Outside Tent from Players Exit area Offices : TD – Referee – Separate Room close to Tournament control area Rooms for seminars:Same as meeting room Rooms for Technical meeting and Umpires briefing : Same as Meeting room or own room if required Doping control area: Same as Classification Room</p> <p>Wi-Fi Internet Connection free of charge : Only to Tournament officials, team coaches/managers, international delegates</p> <p>Internet connection to offices:High Speed Internet connection</p> <p>Field of Play. Size : 56m x 41 m Sunlight :Nil Lighting :Currently 600 lux with capacity to generate 1000 lux Floor :Wooden Sprung Floor with Tinsue Flooring on Show Courts Air-conditioning: Not required How many tables: 2 x Rainbow Showcourts for competition 6 DHS (3 X T1223, 3 X T1818) for competition 6 DHS (3 X T1223, 3 X T1818) for warm up and training area</p>
----------------------------	---------------------------------------------------------------------------------------------------------------------------------------------------------------------------------------------------------------------------------------------------------------------------------------------------------------------------------------------------------------------------------------------------------------------------------------------------------------------------------------------------------------------------------------------------------------------------------------------------------------------------------------------------------------------------------------------------------------------------------------------------------------------------------------------------------------------------------------------------------------------------------------------------------------------------------------------------------------------------------------------------------------------------------------------------------------------------------------------------------------------------------------------------------------------------------------------------------------------------------------------------------------------------------------------------------------------------------------------------------------------------------------------------------------------------------------------------------------------------------------------------------------------------------------------------------------------------------------------------------------------------------------------------------------------------------------------------------------------------------------------------------------------------------------------------------------------------------------------------------------------------------------------------------------------------------------------------------------------------------------------------------

Partitioned from competition area

Call area. **Adjacent to Tournament Control area**

Size :

How many persons may be stay in it: In open area with capacity to accommodate 25 people

Warm Up

Size : **Part of FOP that is partitioned from competition area**

Sunlight : **Nil**

Lighting : **600 lux**

Floor : **Wooden Sprung Floor**

Air-conditioning: **Not required**

How many tables: **6 DHS (3 X T1223, 3 X T1818)**

Training site

Size : **Same as warm up area**

Sunlight : **Nil**

Lighting : **600 lux**

Floor : **Wooden Sprung Floor**

Air-conditioning: **Not required**

How many tables: **Same as warm up area**

<<<< Photos and map >>>>





Classification/Anti Doping Room



Separate Players and Officials Lounge



Disability bathroom/showers and toilets (separate for men & women)



Players/Officials Change room (separate for men & women/separate for players & officials)



6 Rooms for Referee, Meeting Room, Office, Umpires/Technical briefing room, racket control room etc going to passage into the tournament control area and call area



Sport Equipment

Floor : **Wooden Sprung Floor with Tinsue Flooring on Show Courts**
 Tables : **16 DHS (2 Showcourt tables, 6 X T1818 and 6 Accessible tables**
 Balls : **DHS 40+ White balls**
 Nets : **DHS**
 Surround : **DHS**

Classification equipment

Medical beds :**Separate room with beds available .Thereafter used for Anti doping**
 Screens :**Available**
 Desk: **Available**
 Chairs:**Available**

Medical	Ambulance : On call First aids : Available on site Doctor: On call
----------------	-----------------------------------------------------------------------------------------------

	Hospital available: Colonial War Memorial Hospital & Suva Private Hospital Address : Waimanu Road/Amy Street, Suva Distance from Venue: 5 km Physiotherapy rooms : Will have separate room
Administrator equipment	Pigeon Holes : Available Photocopy machine : Available Computers: Available Printer : Available
Technical Officials	Referees: Will be sought from overseas Umpires : 10 for country 8 foreign Computer operator ... Will be adequately provided
Volunteers	Ball children: Will be adequately provided Helper : Will be adequately provided
Repair Services	Will be on call
Ceremonies	Opening and Closing/Medal Presentation including entertainment and cultural dances
Visas	Not required for all Oceania Countries.For Asia and Europe officials, visas available on arrival
Spectators	Approximately number : 500-600 Tickets : Free entry
Media	Public Relation: Have engaged a event management company under the direction of our Federation's PR person TV : Have negotiated with our National TV company- FBCTV Radio: Have negotiated with our National Radio Stations company- FBC which includes a number of English and 2 other vernacular stations Live steaming : Have negotiated with FBCTV Writing press : Will be discussing with the Fiji Times Website:In the process of setting up website for Fiji Table Tennis with links to hotels and other websites Internet connection: Have discussed with Vodafone on wi fi service
Stay dates	Arrival days : 10 April 2017 Classification : 11/12 April 2017 Practice days : 11/12 April 2017

	<p>Opening Ceremony: 13 April 2017 (short opening ceremony)</p> <p>Competition days: 13-16 April 2017</p> <p>Closing Ceremony: 16 April 2017 (at venue)</p> <p>Departure day: 17 April 2017</p>
--	--------------------------------------------------------------------------------------------------------------------------------------------------------------------------------------------------------------------------------

Costs	A\$150 per person per day depending on accommodation and meal options.Cheaper options including wheelchair friendly rooms are available but not in the hotels
--------------	----------------------------------------------------------------------------------------------------------------------------------------------------------------------

Experience in organizing event	<p>Have organized 2002 and 2012 ITTF Oceania Championships, ITTF Oceania Cup, 2005 World Junior Circuit and 2003 Table Tennis events for the 2003 South Pacific Games.Had organized 2016 Fiji Para Open which involved players from 9 Oceania Countries in wheelchair and ambulant categories.</p> <p>The event will also be integrated with the 2017 ITTF Oceania Cup and the 2017 ITTF Oceania Junior Championships</p> <p>Will be working with a Destination Management Company for accommodation, meals, transport , meet and greet as well as a event management company regarding opening /closing ceremony, welcome dinner, farewell cocktail dinner, venue set up and image.Have already commenced discussions with TV production, radio, internet service providers and other service providers</p>
---------------------------------------	-----------------------------------------------------------------------------------------------------------------------------------------------------------------------------------------------------------------------------------------------------------------------------------------------------------------------------------------------------------------------------------------------------------------------------------------------------------------------------------------------------------------------------------------------------------------------------------------------------------------------------------------------------------------------------------------------------------------------------------------------------------------------------------------------------------------------------------

Structure of organizing committee	<p>The organizing committee is currently being established with already a representative of the Destination Management Company , Event Management Company, The President of Fiji Table Tennis (Chairperson of the organizing Committee with over 14 years in organizing table tennis events and attending major table tennis events abroad. Chairperson is also a Chartered Accountant by profession).Other members will be included in the new year following expressions of interest being received from the media, TV, table tennis , marketing backgrounds.</p> <p>The organizing committee will be reporting to the National Associations Management Committee with the National Association responsible for hosting the event.</p> <p>The National Association has been working closely with the National Paralympic Committee and various disability organisations</p>
------------------------------------------	-----------------------------------------------------------------------------------------------------------------------------------------------------------------------------------------------------------------------------------------------------------------------------------------------------------------------------------------------------------------------------------------------------------------------------------------------------------------------------------------------------------------------------------------------------------------------------------------------------------------------------------------------------------------------------------------------------------------------------------------------------------------------------------------------------------------------------------------------------------------------------------------------------

Budget	<p>Income: Majority of the funding will come from the Fiji National Sports Commission and the Government of Fiji via the Ministry of Sports.</p> <p>Corporate ,Municipal and other Government agencies will also be approached as sponsors in cash and kind based on past events.</p> <p>Government has provided tax incentives for corporate sponsors</p>
---------------	---------------------------------------------------------------------------------------------------------------------------------------------------------------------------------------------------------------------------------------------------------------------------------------------------------------------------------------------------------------------------------

	<p>Classifiers costs being financed by PTT Divison and ITTF-Oceania Development Program</p> <p>Expenditure budgeted include venue costs, accommodation/meals/transport and per diem for International delegate, Referee , overseas and local umpires</p> <p>Other costs including TV production, internet service, and other peripherals being negotiated as sponsorship in kind based on past events</p>
<p>Support</p>	<p>National Government- through the Fiji National Sports Commission , a major portion of the costs will be borne and paid by the government</p> <p>Local Council- Suva City Council</p> <p>National Paralympic Committee/National Olympic Committee- logistics and promotional support</p> <p>National Association- fully responsible for the hosting of the event</p> <p>National TV Company- have already agreed in principle to provide live TV production and feed as well daily coverage and build up for the event</p> <p>National Radio Station- Have already agreed in principal to provide radio coverage as well as build up for the event</p> <p>Internet Service Provider- have already provided information and costs</p> <p>Fiji Sports Council- Have already provided reasonable costs for venue, which will include a stage for ceremonies/presentation,</p> <p>Pacific Destinations Limited- have been formally appointed to be the exclusive destination management company responsible for accommodation, meals, transport, meet and greet</p> <p>Bold Alliance- Event management company to look after various aspects of the event</p> <p>Corporate Sponsors- Currently being approached including service providers</p>
<p>Request from organizers</p>	<p>ITTF Oceania Table Tennis and Australian /New Zealand or other stakeholders involved with people with disabilities including regional organisations required to provide support financially and with personnel.Also to adequately promote the event in their own countries and encourage more people with disabilities to attend</p>
<p>Recommendations</p>	<p>More support in all aspects is required to promote para table tennis in the Pacific Islands .More accommodation options for wheelchair friendly accommodation .More promotion required to promote sports tourism for people with disabilities by the various stakeholders.</p>